



Solid - Metallic
Wooden - Marble - Sand
Aluminium Composite Panels

ALSTRONG[®]
always looks new



About us

Alstrong North America is a premier manufacturer of Aluminium Composite Panels widely recognized as one of the top 10 global producers of ACM/ACP. Alstrong caters to North America through its state of the art manufacturing facilities located in the United Arab Emirates and surrounding regions supporting multiple industries in their Aluminum needs.

Alstrong's strong emphasis on R&D and intrinsic quality control at every step ensure innovative products that are engineered to uphold its motto of "Always looks new". Underscoring this perpetually strong saga of product quality, our laboratories are equipped with most modern and analytical machines that keep an eagle eye on quality standards. Seamless production and efficiency in deliveries is ensured through our integrated SAP system.

8 Reasons that make **ALSTRONG** the best choice



Anti-Bacterial Product



Green Product



10+ Years Warranty



Colour Consistency



Export Quality



An Expert Team



Highest Level of QC Processes



A Global Brand

Specification:

Standard Width	:	1250 mm
Available Width	:	1000 mm, 1500 mm
Standard Length	:	3200 mm, 4000 mm
Available Length	:	Upto 6000 mm
Available Thickness	:	3 mm, 4 mm, 5 mm, 6 mm
Available Skin Thickness	:	0.3 mm-0.5 mm

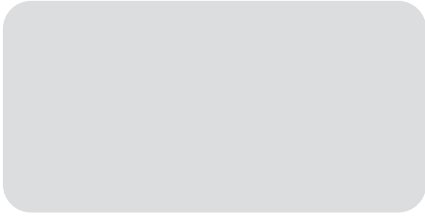
Custom Specifications also available

Panel Tolerance:

Length	:	± 4 mm
Width	:	± 2 mm
Bow (Length & Width)	:	Maximum 0.8%
Squareness	:	Maximum 5 mm
ACP Thickness	:	± .2 mm
Coil Thickness	:	± .03 mm



Metallic Colours



Bright Silver - AL 01



Metallic Silver - AL 02



Classic Gold - AL 07



Copper Metallic - AL 11



Egyptian Bronze - AL 17



Black Silver - AL 26



New Champagne - AL 27



Adnoc Blue - AL 750



Desert Rose Metallic - AL 752

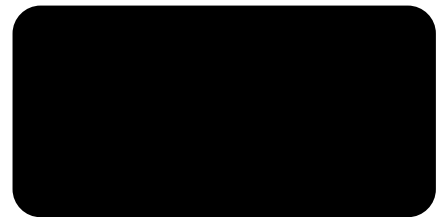
Solid Colours



Bright Red - AL 08



Signal Blue - AL 10



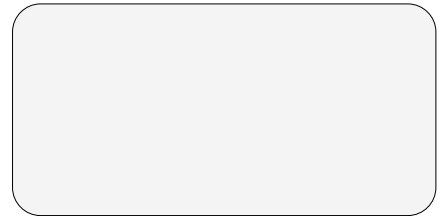
Black - AL 12



Traffic Green - AL 31



Bright Yellow - AL 35



Milky White - AL 503



Sunset Orange - AL 504



Apricot White - AL 753



Coffee Brown - AL 755

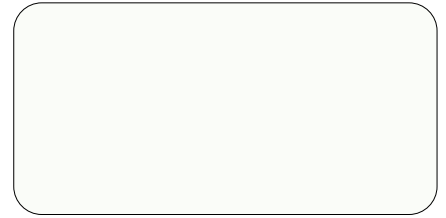
Metallic Colours



Super White - AL 13



Ivory White (D) - AL 757



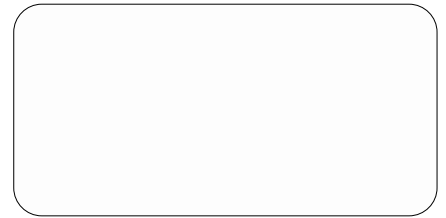
Traffic White - AL 758



Pure White - AL 05



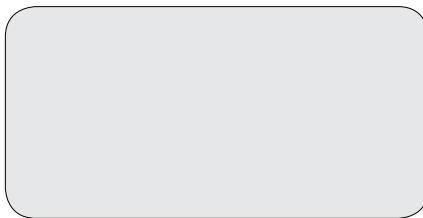
Broken White - AL 39



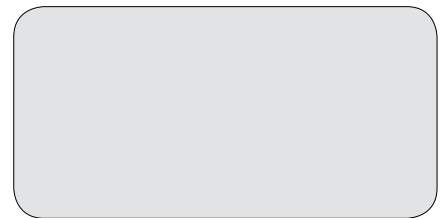
Sparkling Pearl White - AL 630



Metallic Steel Gray - AL 619



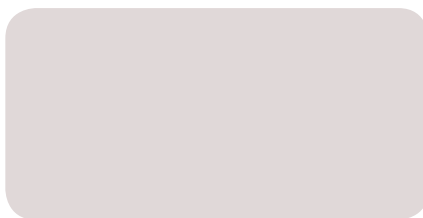
Bright Ice Silver - AL 616



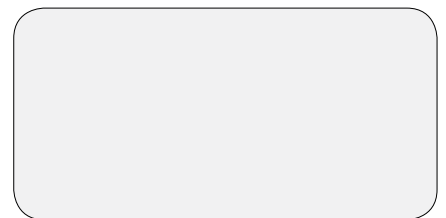
New Bright Silver - AL 651



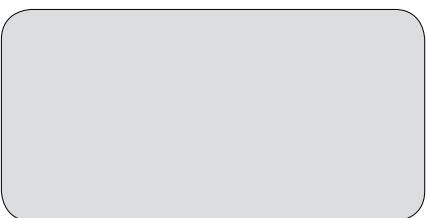
Champagne Silver(D) - AL 751



Metallic Medium Silver - AL 617



Silver Mirror Finish - AL 626



Silver Brush Finish - AL 628



Medium Metal - AL 652



Lilac Silver - AL 514



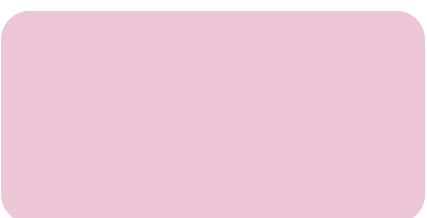
Red Silver - AL 28



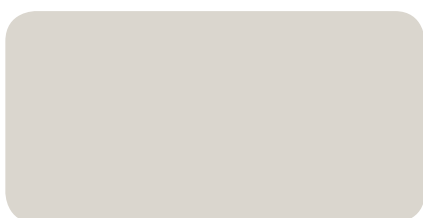
Blue Silver - AL 24



Light Bronze - AL 14



Metallic Rose Bronze - AL 621



Champagne Gold - AL 04



Golden Metallic Finish - AL 624

Metallic Colours



Gold Mirror Finish - AL 627

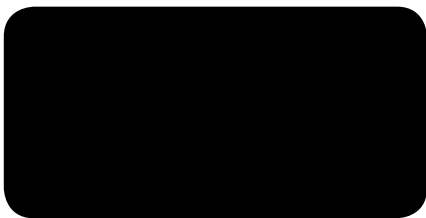


Rat Grey - AL 756



Sparkling Black - AL 655

Solid Colours



Black Glossy - AL 663



Red Glossy - AL 659



Terracota Red - AL 702



Light Blue - AL 29



Classic Blue - AL 653



HP Blue - AL 201



Ink Blue - AL 516



Sand Yellow - AL 209



Enoc Green - AL 759



Emerald Green - AL 508



Jade Green - AL 09



Metallic Mid-Night Green - AL 623



New Orange Pantone - AL 509



Traffic Yellow - AL 19



Burgundy(D) - AL 754

Solid Colours



Moderate Purple - AL 606

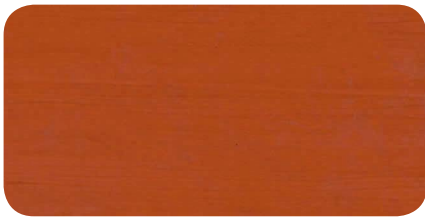


Moderate Violet - AL 701



UPCOMING

Wood & Marble



Mahogany - AL 633



Rosewood - AL 631



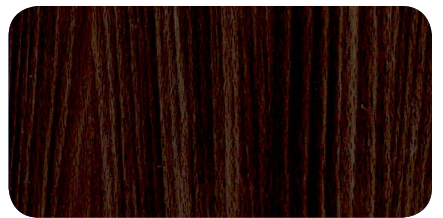
Fine Cherry - AL 638



Walnut Burn - AL 640



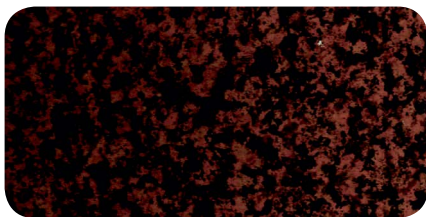
Dark Walnut - AL 639



Dark Oak - AL 632



Kolahari Oak - AL 678



Archi Pelago Red - AL 637



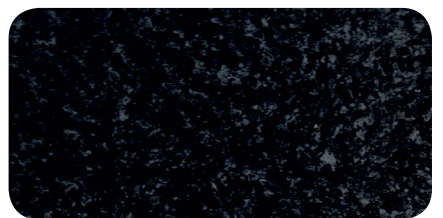
Dark Emperador - AL 636



Santuario - AL 634



Silvia - AL 635



Granite Cambrian Black - AL 641

NOTE:

- 1) Above samples are for reference only, actual colors may vary slightly from the displayed colors.
- 2) To avoid possible reflection differences, it is imperative to install the panels in the same direction as marked on the protective film.
- 3) Please order the total requirements for one particular building in a single order, for metallic and solid colors, an optical change shade may occur due to the metallic particles of these lacquers.
- 4) The delivery period for non standard colors can extend upto 6 weeks from the date of order and there shall be a minimum order requirement for non-standard colors.
- 5) Colors given in the shade card are to provide our clients with some of the most popular options. However, we can as well develop other colors as per the customers' requirements. Please contact our office/sales representative for your specific needs.



North American Head office
ALSTRONG NORTH AMERICA LTD
1300 Cornwall Road #201, Oakville ON, Canada



Tested & Certified by:



For sales and inquiry
Phone: +1 800-825-6915
Email : sales@alstrongusa.com
Website : alstrongusa.com

